

June 2026

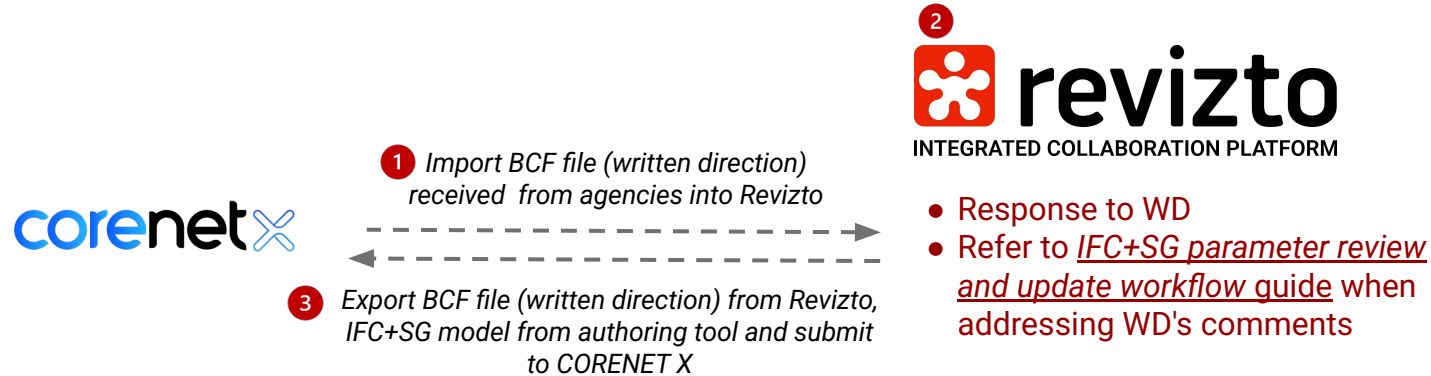
BCF issue review and response workflow



01 Workflow

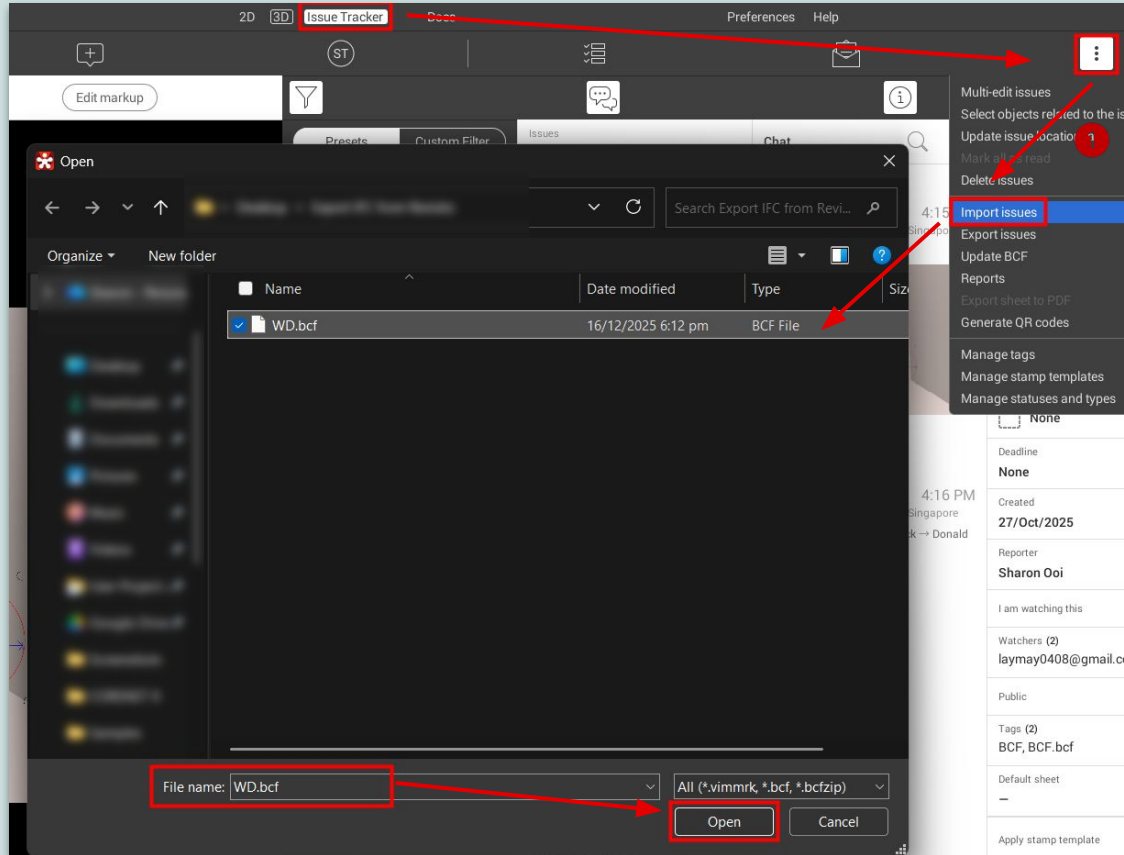


BCF issue review and response workflow



- 1 Import the BCF file into Revizto to review the WD from agencies
- 2 Address comments by refer to **IFC+SG parameter review and update workflow** guide as needed
- 3 Export responses as a BCF file and refer to **IFC review and quality checking** guide to resubmit the BCF file and IFC+SG model to CORENET X

1- Import the BCF file into Revizto to review the WD from agencies



1- Import the BCF file into Revizto to review the WD from agencies (*con't*)

Issue types not found in the project

The selected file contains issue types that are not found in the project. Please select the replacement issue types.

Issue → Standard issue

Confirm Cancel



Specify status mapping

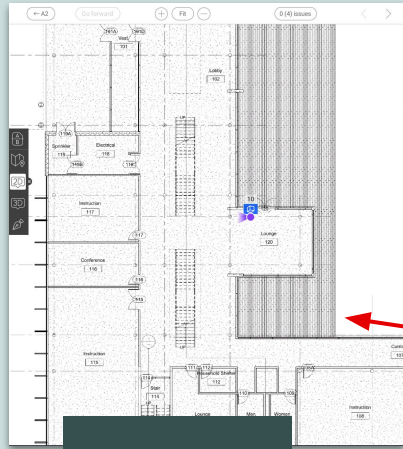
Some of the imported issues have statuses that are not allowed for their issue types in this project. Please select the replacement statuses for them.

Standard issue 1 issue(s)

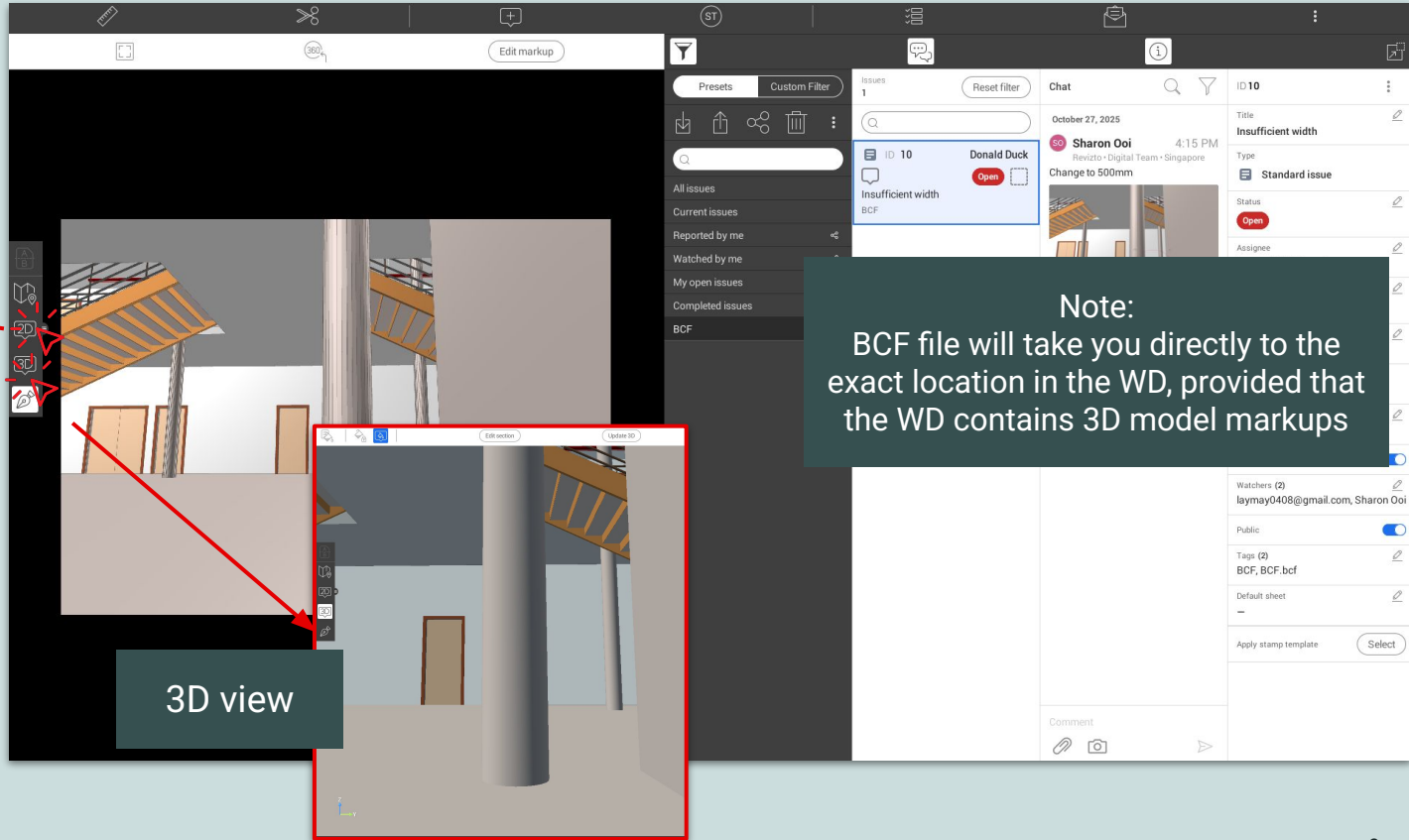
Response to QP → Open

OK Cancel

2.1- Check the WD



2D view



3D view

Note:
BCF file will take you directly to the exact location in the WD, provided that the WD contains 3D model markups

2.2- Refer to IFC+SG parameter review and update workflow guide to work on the WD's comment

3.2- Export properties to a CSV file via the Selection Inspector

Selection Inspector

Export into CSV

Input undefine

revizto ©2026 REVIZTO LTD.

2- Coordinate and manage models within Revizto *Review undefined parameter in tabular format*

1. Search Set

Double-click

revizto ©2026 REVIZTO LTD.

IFC+SG parameter review and update workflow from authoring model

1 Publish native model

2 revizto
INTEGRATED COLLABORATION PLATFORM

- Design clearance check
- Missing parameters check
- Non-compliance parameters check

3 Switchback to authoring tool/
Export the properties table as a CSV file
and batch import it into the authoring tool

Authoring tools

- 1 Direct publish models from authoring tools into Revizto via plugin
- 2 Coordinate and manage models within Revizto
- 3 1. Use one-click switchback from Revizto to the authoring tool to address design issues
2. Export properties to a CSV file via the Selection Inspector, and batch import them into the authoring tool using Diroots connector

revizto

3

2.3- Address comments

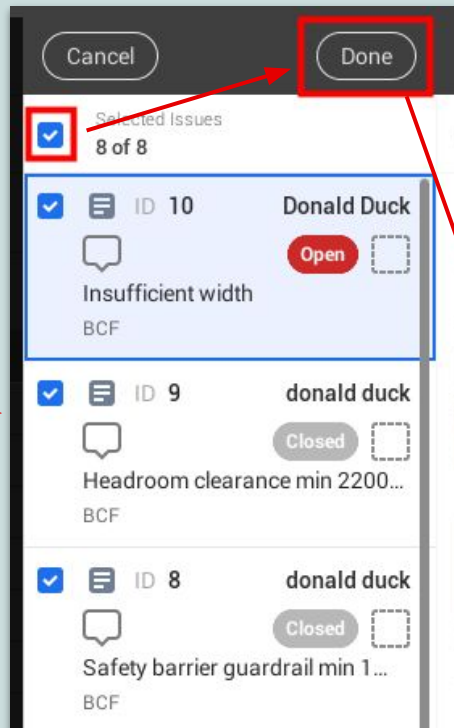
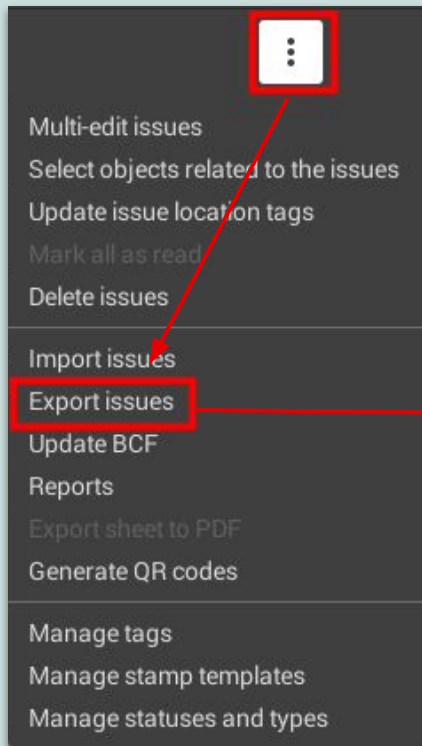
The screenshot displays the Revizto interface with several key components:

- 3D Model:** A 3D architectural rendering of a building interior with a red circle and a blue dimension line indicating a width of 400 mm.
- Issues Panel:** A sidebar on the left showing filters like 'Presets' and 'Custom Filter', and a list of issues including 'Insufficient width BCF'.
- Chat Window:** A central chat area showing messages from Sharon Ooi and Donald Duck, with a 'Comment' input field highlighted by a red box.
- Issue Details Panel:** A panel on the right showing details for issue ID 10, including a 'Status' dropdown menu with options: 'Open', 'In progress', 'Solved', and 'Closed'. The 'Open' button is highlighted with a red box.

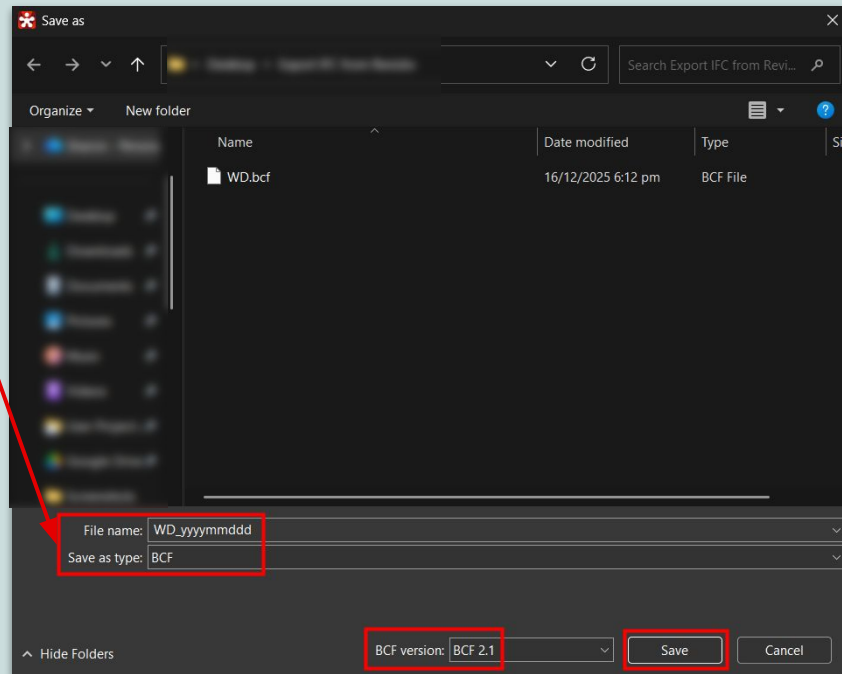
Reply in comment →

Note: Change the status to **Solved** once you have responded to and resolved the agency office's comment.

3- Export responses as a BCF file



Ensure apply BCF preset filter



Ensure select BCF 3.0 version

02

Support & feedback



Support & feedback

We are committed to the continuous improvement of our tools to better serve the industry. As the CORENET X standards evolve, your insights are invaluable.

If you have any feedback regarding the Revizto presets, or if you require technical clarification on the application, please contact our team:

Primary contact:

Sharon Ooi - Industry Consultant (lm.ooi@revizto.com)

Secondary contact:

Chris Mawson - Reg. CS Director (APAC) (c.mawson@revizto.com)



REVIZTO.COM

When it has to be made right,
it has to be Revizto.

Thank you.

 revizto